

Tuba

ANTÍFONA

A ti, ó Deus, fiel e bom Senhor.
Eterno Pai, Supremo benfeitor.

EVENTIDE

William Henry Monk (1823-1889)

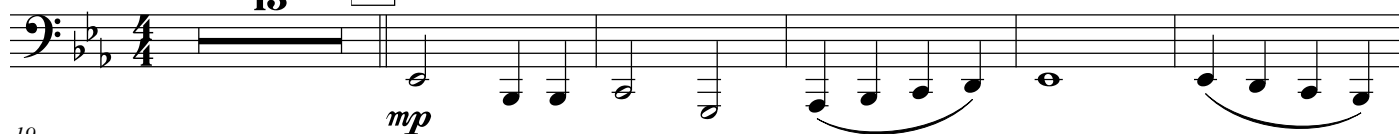
Henry Maxwell Wright (1849-1931)

Arr: Willames S. da Costa

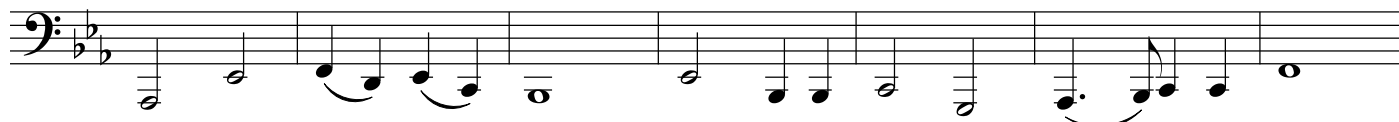
Andante ♩ = 96

13

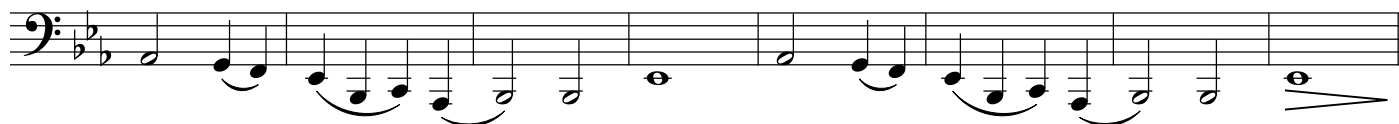
A



19



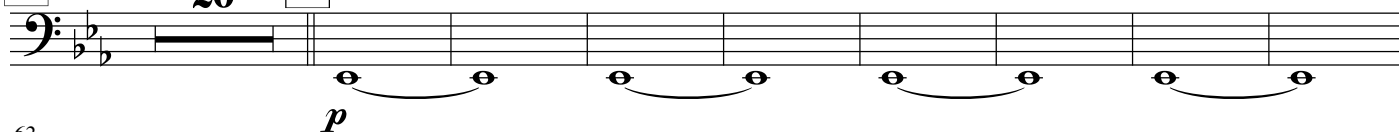
26



B

20

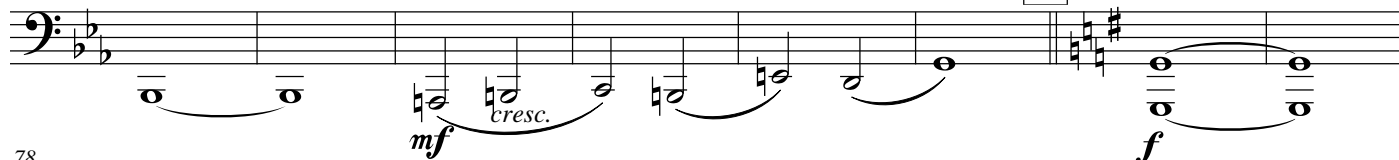
C



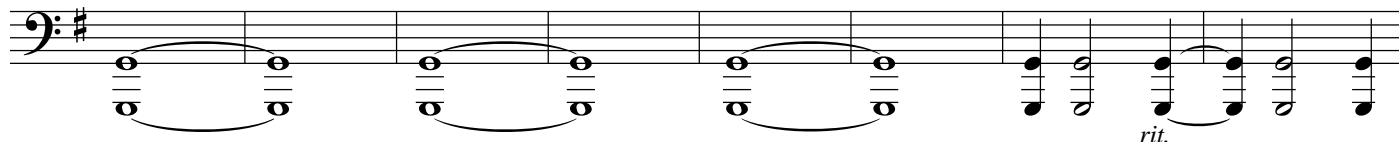
62



70



78



86



92



97



104



111

The musical notation for the bass line of 'The Rose Tree' is shown in a single staff. It begins with a bass clef and a key signature of one sharp (F#). The melody consists of eighth and quarter notes, with a double bar line after the first four measures. The second part of the melody starts with a forte (*ff*) dynamic marking and continues with eighth and quarter notes.

[illegible][illegible]

The musical score for the bass line of 'The Rose Tree' is written in 2/4 time with a key signature of three flats (B-flat, E-flat, A-flat). The melody consists of quarter notes: B-flat2, A-flat2, G2, F2, E-flat2, D2, C2, B-flat1, A-flat1, G1, F1, E-flat1, D1, C1, B-flat0, A-flat0, G0, F0, E-flat0, D0, C0, B-flat-1, A-flat-1, G-1, F-1, E-flat-1, D-1, C-1, B-flat-2, A-flat-2, G-2, F-2, E-flat-2, D-2, C-2, B-flat-3, A-flat-3, G-3, F-3, E-flat-3, D-3, C-3, B-flat-4, A-flat-4, G-4, F-4, E-flat-4, D-4, C-4, B-flat-5, A-flat-5, G-5, F-5, E-flat-5, D-5, C-5, B-flat-6, A-flat-6, G-6, F-6, E-flat-6, D-6, C-6, B-flat-7, A-flat-7, G-7, F-7, E-flat-7, D-7, C-7, B-flat-8, A-flat-8, G-8, F-8, E-flat-8, D-8, C-8, B-flat-9, A-flat-9, G-9, F-9, E-flat-9, D-9, C-9, B-flat-10, A-flat-10, G-10, F-10, E-flat-10, D-10, C-10, B-flat-11, A-flat-11, G-11, F-11, E-flat-11, D-11, C-11, B-flat-12, A-flat-12, G-12, F-12, E-flat-12, D-12, C-12, B-flat-13, A-flat-13, G-13, F-13, E-flat-13, D-13, C-13, B-flat-14, A-flat-14, G-14, F-14, E-flat-14, D-14, C-14, B-flat-15, A-flat-15, G-15, F-15, E-flat-15, D-15, C-15, B-flat-16, A-flat-16, G-16, F-16, E-flat-16, D-16, C-16, B-flat-17, A-flat-17, G-17, F-17, E-flat-17, D-17, C-17, B-flat-18, A-flat-18, G-18, F-18, E-flat-18, D-18, C-18, B-flat-19, A-flat-19, G-19, F-19, E-flat-19, D-19, C-19, B-flat-20, A-flat-20, G-20, F-20, E-flat-20, D-20, C-20, B-flat-21, A-flat-21, G-21, F-21, E-flat-21, D-21, C-21, B-flat-22, A-flat-22, G-22, F-22, E-flat-22, D-22, C-22, B-flat-23, A-flat-23, G-23, F-23, E-flat-23, D-23, C-23, B-flat-24, A-flat-24, G-24, F-24, E-flat-24, D-24, C-24, B-flat-25, A-flat-25, G-25, F-25, E-flat-25, D-25, C-25, B-flat-26, A-flat-26, G-26, F-26, E-flat-26, D-26, C-26, B-flat-27, A-flat-27, G-27, F-27, E-flat-27, D-27, C-27, B-flat-28, A-flat-28, G-28, F-28, E-flat-28, D-28, C-28, B-flat-29, A-flat-29, G-29, F-29, E-flat-29, D-29, C-29, B-flat-30, A-flat-30, G-30, F-30, E-flat-30, D-30, C-30, B-flat-31, A-flat-31, G-31, F-31, E-flat-31, D-31, C-31, B-flat-32, A-flat-32, G-32, F-32, E-flat-32, D-32, C-32, B-flat-33, A-flat-33, G-33, F-33, E-flat-33, D-33, C-33, B-flat-34, A-flat-34, G-34, F-34, E-flat-34, D-34, C-34, B-flat-35, A-flat-35, G-35, F-35, E-flat-35, D-35, C-35, B-flat-36, A-flat-36, G-36, F-36, E-flat-36, D-36, C-36, B-flat-37, A-flat-37, G-37, F-37, E-flat-37, D-37, C-37, B-flat-38, A-flat-38, G-38, F-38, E-flat-38, D-38, C-38, B-flat-39, A-flat-39, G-39, F-39, E-flat-39, D-39, C-39, B-flat-40, A-flat-40, G-40, F-40, E-flat-40, D-40, C-40, B-flat-41, A-flat-41, G-41, F-41, E-flat-41, D-41, C-41, B-flat-42, A-flat-42, G-42, F-42, E-flat-42, D-42, C-42, B-flat-43, A-flat-43, G-43, F-43, E-flat-43, D-43, C-43, B-flat-44, A-flat-44, G-44, F-44, E-flat-44, D-44, C-44, B-flat-45, A-flat-45, G-45, F-45, E-flat-45, D-45, C-45, B-flat-46, A-flat-46, G-46, F-46, E-flat-46, D-46, C-46, B-flat-47, A-flat-47, G-47, F-47, E-flat-47, D-47, C-47, B-flat-48, A-flat-48, G-48, F-48, E-flat-48, D-48, C-48, B-flat-49, A-flat-49, G-49, F-49, E-flat-49, D-49, C-49, B-flat-50, A-flat-50, G-50, F-50, E-flat-50, D-50, C-50, B-flat-51, A-flat-51, G-51, F-51, E-flat-51, D-51, C-51, B-flat-52, A-flat-52, G-52, F-52, E-flat-52, D-52, C-52, B-flat-53, A-flat-53, G-53, F-53, E-flat-53, D-53, C-53, B-flat-54, A-flat-54, G-54, F-54, E-flat-54, D-54, C-54, B-flat-55, A-flat-55, G-55, F-55, E-flat-55, D-55, C-55, B-flat-56, A-flat-56, G-56, F-56, E-flat-56, D-56, C-56, B-flat-57, A-flat-57, G-57, F-57, E-flat-57, D-57, C-57, B-flat-58, A-flat-58, G-58, F-58, E-flat-58, D-58, C-58, B-flat-59, A-flat-59, G-59, F-59, E-flat-59, D-59, C-59, B-flat-60, A-flat-60, G-60, F-60, E-flat-60, D-60, C-60, B-flat-61, A-flat-61, G-61, F-61, E-flat-61, D-61, C-61, B-flat-62, A-flat-62, G-62, F-62, E-flat-62, D-62, C-62, B-flat-63, A-flat-63, G-63, F-63, E-flat-63, D-63, C-63, B-flat-64, A-flat-64, G-64, F-64, E-flat-64, D-64, C-64, B-flat-65, A-flat-65, G-65, F-65, E-flat-65, D-65, C-65, B-flat-66, A-flat-66, G-66, F-66, E-flat-66, D-66, C-66, B-flat-67, A-flat-67, G-67, F-67, E-flat-67, D-67, C-67, B-flat-68, A-flat-68, G-68, F-68, E-flat-68, D-68, C-68, B-flat-69, A-flat-69, G-69, F-69, E-flat-69, D-69, C-69, B-flat-70, A-flat-70, G-70, F-70, E-flat-70, D-70, C-70, B-flat-71, A-flat-71, G-71, F-71, E-flat-71, D-71, C-71, B-flat-72, A-flat-72, G-72, F-72, E-flat-72, D-72, C-72, B-flat-73, A-flat-73, G-73, F-73, E-flat-73, D-73, C-73, B-flat-74, A-flat-74, G-74, F-74, E-flat-74, D-74, C-74, B-flat-75, A-flat-75, G-75, F-75, E-flat-75, D-75, C-75, B-flat-76, A-flat-76, G-76, F-76, E-flat-76, D-76, C-76, B-flat-77, A-flat-77, G-77, F-77, E-flat-77, D-77, C-77, B-flat-78, A-flat-78, G-78, F-78, E-flat-78, D-78, C-78, B-flat-79, A-flat-79, G-79, F-79, E-flat-79, D-79, C-79, B-flat-80, A-flat-80, G-80, F-80, E-flat-80, D-80, C-80, B-flat-81, A-flat-81, G-81, F-81, E-flat-81, D-81, C-81, B-flat-82, A-flat-82, G-82, F-82, E-flat-82, D-82, C-82, B-flat-83, A-flat-83, G-83, F-83, E-flat-83, D-83, C-83, B-flat-84, A-flat-84, G-84, F-84, E-flat-84, D-84, C-84, B-flat-85, A-flat-85, G-85, F-85, E-flat-85, D-85, C-85, B-flat-86, A-flat-86, G-86, F-86, E-flat-86, D-86, C-86, B-flat-87, A-flat-87, G-87, F-87, E-flat-87, D-87, C-87, B-flat-88, A-flat-88, G-88, F-88, E-flat-88, D-88, C-88, B-flat-89, A-flat-89, G-89, F-89, E-flat-89, D-89, C-89, B-flat-90, A-flat-90, G-90, F-90, E-flat-90, D-90, C-90, B-flat-91, A-flat-91, G-91, F-91, E-flat-91, D-91, C-91, B-flat-92, A-flat-92, G-92, F-92, E-flat-92, D-92, C-92, B-flat-93, A-flat-93, G-93, F-93, E-flat-93, D-93, C-93, B-flat-94, A-flat-94, G-94, F-94, E-flat-94, D-94, C-94, B-flat-95, A-flat-95, G-95, F-95, E-flat-95, D-95, C-95, B-flat-96, A-flat-96, G-96, F-96, E-flat-96, D-96, C-96, B-flat-97, A-flat-97, G-97, F-97, E-flat-97, D-97, C-97, B-flat-98, A-flat-98, G-98, F-98, E-flat-98, D-98, C-98, B-flat-99, A-flat-99, G-99, F-99, E-flat-99, D-99, C-99, B-flat-100, A-flat-100, G-100, F-100, E-flat-100, D-100, C-100, B-flat-101, A-flat-101, G-101, F-101, E-flat-101, D-101, C-101, B-flat-102, A-flat-102, G-102, F-102, E-flat-102, D-102, C-102, B-flat-103, A-flat-103, G-103, F-103, E-flat-103, D-103, C-103, B-flat-104, A-flat-104, G-104, F-104, E-flat-104, D-104, C-104, B-flat-105, A-flat-105, G-105, F-105, E-flat-105, D-